

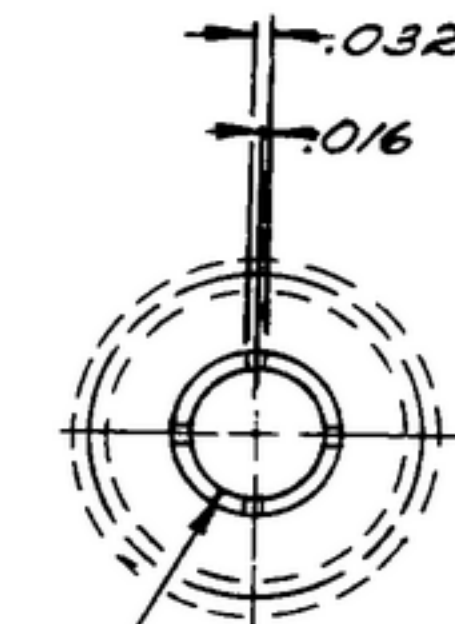
NOTICE: WHEN GOVERNMENT DRAWINGS, SPECIFICATIONS, OR OTHER DATA ARE USED FOR ANY PURPOSE OTHER THAN IN CONNECTION WITH A DEFINITELY RELATED GOVERNMENT PROCUREMENT OPERATION, THE UNITED STATES GOVERNMENT THEREBY INCURS NO RESPONSIBILITY AND NO OBLIGATION WHATSOEVER, AND THE FACT THAT THE GOVERNMENT MAY HAVE FORMULATED, FURNISHED, OR IN ANY WAY SUPPLIED THE SAID DRAWINGS, SPECIFICATIONS, OR OTHER DATA IS NOT TO BE CONSTRUED AS IMPLICATION OR COOPERATION, OR CONFERRING ANY RIGHTS OR PERMISSION TO MANUFACTURE, USE, OR SELL ANY PATENTED INVENTION THAT MAY IN ANY WAY BE RELATED THERETO.

THIS DOCUMENT HAS BEEN PURCHASED BY THE GOVERNMENT AND MAY BE REPRODUCED AND USED IN CONNECTION WITH ANY GOVERNMENT PROCUREMENT OR BUYER'S OPERATION.

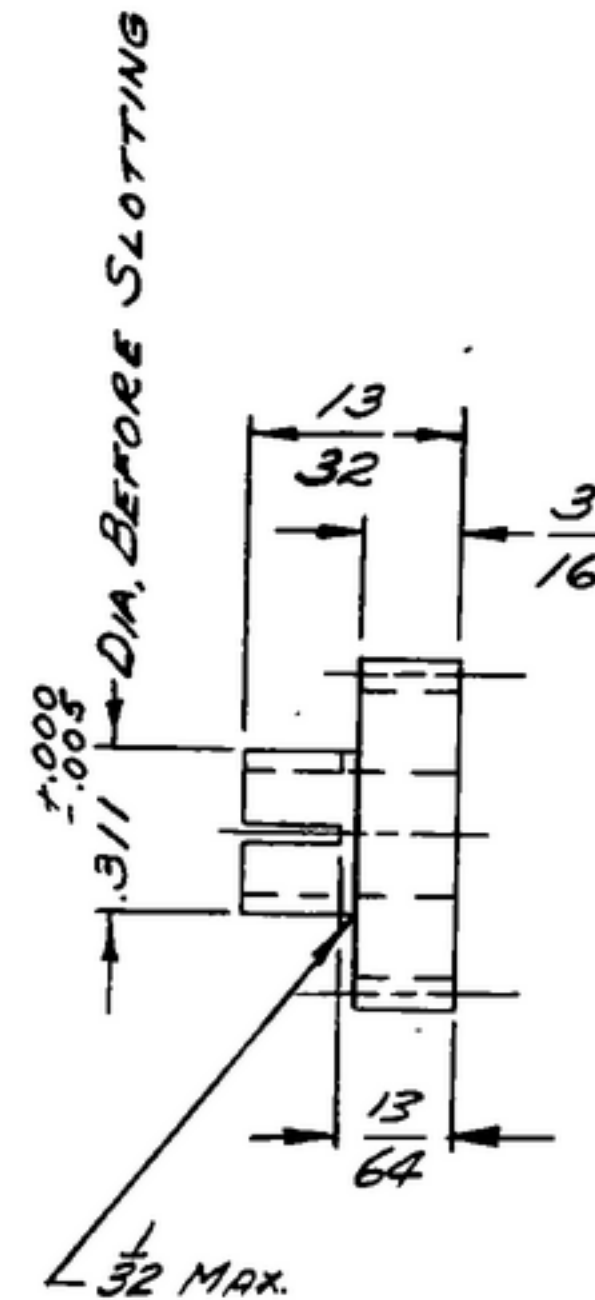
\* FOR INFORMATION ONLY. CONTRACTOR MAY AT HIS OPTION DEVIATE FROM THESE PROCESS DETAILS.

REVISIONS			
SYN	DESCRIPTION	DATE	APPROVAL

4 SLOTS EQUALLY SPACED



$\pm .0005$   
 $-.0000$   
DIA  
BEFORE SLOTTING



NOTES:

1. GEAR DATA.

NORMAL DIAMETRAL PITCH 48  
 NORMAL PRESSURE ANGLE 20°  
 NUMBER OF TEETH 21  
 THEORETICAL PITCH DIAMETER .6187  
 HELIX ANGLE 45° RIGHT HAND  
 BACKLASH .000 TO .001 WHEN REFERRED TO THE THEORETICAL PITCH CIRCLE  
 TOTAL COMPOSITE ERROR NOT TO EXCEED .003 WHEN MEASURED WITH MASTER GEAR  
 AMERICAN STANDARD INVOLUTE TOOTH FORM  
 ALL TERMS USED AS DEFINED BY A.G.M.A. STDS.

CRES, COMP. 3035, COND. B, SURFACE COND d, PER SPEC MIL-S-7720

FINISH: E300 PER SPEC. MIL-F-14072.

\* COLLINS 580 0025 00

COLLINS PART NO.	ITEM	QTY	PART NO.	DESCRIPTION	DATE	DATE SPEC
------------------	------	-----	----------	-------------	------	-----------

LIST OF MATERIAL

COLLINS PART NO. 558 0233 002

DRAWN HENRY				CHECKED Rm		APPROVED		COLLINS RADIO CO. GEAR DATA FORM 1921A-P.H 51-93		DEPARTMENT OF THE ARMY SIGNAL CORPS ENGINEERING LABORATORIES  FORT MONMOUTH NEW JERSEY  SM-B-248884
UNLESS OTHERWISE SPECIFIED: DECIMAL DIMENSIONS INCLUDING HOLE SIZES MAY VARY $\pm .005$ FRACTIONAL DIMENSIONS INCLUDING HOLE SIZES MAY VARY $\pm 1/64$ MACHINED ANGLES MAY VARY $\pm 1^\circ$ SHEARED ANGLES MAY VARY $\pm .25^\circ$ BROKEN ANGLES MAY VARY $\pm 1^\circ$ ECCENTRICITY BETWEEN ANY DIAMETERS ON THE SAME CENTERLINE SHALL NOT EXCEED .010 TOTAL INDICATOR READING. ALL DIMENSIONS ARE FINISH DIMENSIONS INCLUDING APPLIED FINISH AND ARE GIVEN IN INCHES.								REVIEWED PME		
SM-D-343600		SM-D-248975		S-D-248775		APPROVED HLY PME		GEAR-HELICAL		
COLLINS NO.	QTY	NEXT ASSY	USED ON	DATE 8 DEC 55		SCALE 2/1				